

## GET THE FULL ISSUE. EXTENSION IN THE WEST: Team Builders

In this issue of *Rural Connections*, Western Extension Agents, Faculty, and Specialists share exceptional programs on significant issues that include small business development, local and regional foods, agriculture water conservation, wildfire preparedness, and renewable energy.

[Download the issue.](#)



## INTRODUCTION

In this issue...

BY DON E. ALBRECHT

The Morrill Act of 1862 created the Land-Grant University system, which now has at least one institution in each of the 50 states. The Land-Grant system's three-fold mission includes teaching, conducting research intended to generate knowledge to address significant problems, and then extending useful knowledge generated by this research to the general public through Cooperative Extension. This system has proven to be extremely beneficial for vast numbers of people for over 150 years. [Read More.](#)

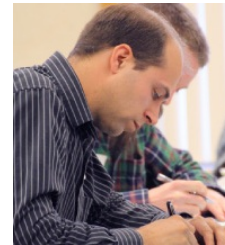


## WASHINGTON RURAL PATHWAYS TO PROSPERITY CONFERENCE "SMALL BUSINESS IS EVERYBODY'S BUSINESS" ACHIEVES WIDE-RANGING SUCCESS USING A NEW MODEL OF DELIVERY

[Innovative Approach Brings Training Opportunities to Rural Areas](#)

BY DEBRA HANSEN, MONICA BABINE, AND MARGARET VIEBROCK

Imagine attending a conference that costs a fraction of traditional state-wide events – where you don't have to travel out of your area, you have access to national, regional, and local experts, you strengthen local relationships, and at the end of the day you have begun taking steps to enhance community vitality. [Read more.](#)



## EXPLORE SAMOAN CULTURE AND FOOD SECURITY THROUGH THE AMERICAN YOUTH LEADERSHIP PROGRAM

[Advancing Mutual Understanding Between the People of the U.S. and Samoa](#)

BY STACEY S. MACARTHUR

The combination of extending knowledge to the people coupled with the 4-H motto of Learn by Doing describes the American Youth Leadership Program to Samoa. This program took place in 2014-2015 and was sponsored by the U.S. Department of State, Bureau of Educational and Cultural Affairs, and was administered by the University of Wyoming 4-H Youth Development Program. It provided an opportunity for 20 youth and six adult participants from the 13 western states to experience the Samoan culture first hand while exploring the changing food and healthy-living climate. [Read more.](#)

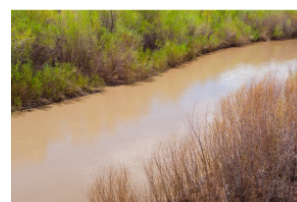


## COLORADO RIVER BASIN AGRICULTURAL WATER CONSERVATION CLEARINGHOUSE

[An Innovative Web-Based Project and Communities of Practice](#)

BY ELIZABETH PLOMBON, JULIE KALLENBERGER, REAGAN WASKOM, AND MARYLOU SMITH

Spanning seven states, providing water to an estimated 40 million users, generating more than 4,200 megawatts of hydropower, supplying irrigation water for nearly 5.5 million acres of land, and standing as the life force for at least 22 federally recognized tribes, seven National Wildlife Refuges, four National Recreation Areas, and 11 National Parks, the Colorado River is one of the most vital sources of water in the United States and Mexico (USBR, 2012). But as much of the Southwest enters its nearly 15th consecutive year of drought, the increasing strain put on the



## NEVADA'S LIVING WITH FIRE PROGRAM

An Organized Effort to Teach and Promote Pre-Wildfire Threat Reduction Practices

BY ED SMITH, SONYA SISTARE, AND ELWOOD MILLER



Is it possible for a community of people to live in a high-hazard environment and co-exist with the threat of wildfire? The answer is "yes" if the community accepts the reality of the threat, engrains fire as a facet of the community's culture, takes action to address the threat, and adopts an attitude of partnership with the fire protection agencies. Living the Fire (LWF) is an interagency program coordinated and implemented by the University of Nevada Cooperative Extension that teaches vulnerable residents how to live more safely in wildfire prone areas. [Read more.](#)

## RENEWABLE ENERGY'S ROLE IN UNIVERSITY OUTREACH TO THE PUBLIC

Statewide Survey Indicates Strong Interest in Increased Renewable Energy Information

BY BLAKE H. THOMAS AND ROSLYNN BRAIN



Renewable resources are growing at an exponential rate despite their seemingly modest role in Utah's energy portfolio. In 2012, renewable resources accounted for 1.8 percent of Utah's production portfolio and 2.4 percent of its consumption portfolio (Vanden Berg, 2014). The distinction between these two percentages (production vs. consumption) is attributed simply to the fact that Utah is an exporter of electricity, sending 25 percent of its approximately 10,000 gigawatt hours to consumers in other states. [Read more.](#)

## ABOUT THE AUTHORS

### DON E. ALBRECHT

Director  
Western Rural Development Center  
Utah State University

### DEBRA HANSEN

County Director, Stevens County  
Washington State University

### MONICA BABINE

Senior Associate, Digital Initiatives  
Washington State University Extension

### MARGARET VIEBROCK

County Director, Douglas County  
Washington State University

### STACEY S. MACARTHUR

Extension Assistant Professor  
Utah State University

### ELIZABETH PLOMBON

Master's Candidate and Graduate Research Assistant  
Colorado Water Institute  
Colorado State University

### JULIE KALLENBERGER

Water Education and Outreach Specialist  
Colorado Water Institute  
Colorado State University

### REAGAN WASKOM

Director  
Colorado Water Institute  
Colorado State University

### MARYLOU SMITH

Policy and Collaboration Specialist  
Colorado Water Institute  
Colorado State University

### ED SMITH

Natural Resource Specialist  
University of Nevada Cooperative Extension

### SONYA SISTARE

Living with Fire Senior Manager  
University of Nevada Cooperative Extension

### ELWOOD MILLER

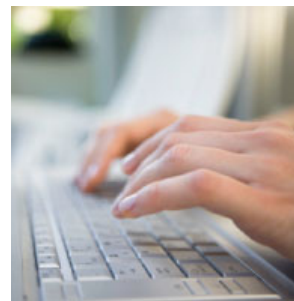
Nevada Network of Fire Adapted Communities Coordinator  
University of Nevada Cooperative Extension

### BLAKE H. THOMAS

Graduate Research Assistant  
Utah State University

### ROSLYNN BRAIN

Assistant Professor and Sustainable Communities Extension Specialist  
Utah State University



## DID YOU MISS AN ISSUE?

Past issues of *Rural Connections* are available on our website.

[Read past issues today!](#)

STAY CONNECTED

